



# May 2024 NEWSLETTER



Church Lawton School, Cherry Tree Avenue, Church Lawton,  
Stoke-on-Trent, Staffordshire. ST7 3EL



## PRINCIPAL NOTES

---

Dear Parents and Carers,

As we approach the Whitsun holiday, let's take a moment to reflect on its significance and the joy it brings. Whitsun, holds historical and cultural significance, marking the seventh Sunday after Easter. Over time, Whitsun evolved into a time of festivities, with customs like parades, walks, and fairs. Whilst observance has shifted with time, the spirit of renewal and community remains.

Reflecting on the passing academic year, it's remarkable how swiftly time flies. As I engage with our students, I can sense their puzzlement as I mention future exams and milestones. Yet, as we navigate through the days, from Christmas to Easter and now to exam preparations, it's evident how swiftly life progresses. Amidst the rush, let's remind ourselves to cherish the present moment and not hasten through life's journey.

This half of the Summer Term has been bustling with activity, especially for our Year 6 students who tackled their SATs with determination and enthusiasm. Their hard work and commitment shone through during this testing period, reflecting their readiness for the challenges ahead.

Meanwhile, our upper Secondary and Post-16 students have embarked on their exam journey, guided by a meticulous timetable spanning six weeks. Under the careful supervision of Mr. Smith, our school's Examinations Officer, they will navigate through this period with resilience and focus.

I am proud to witness the support and understanding exhibited by our entire school community, creating an environment conducive to concentration and success.

## PRINCIPAL NOTES

---

(Continued...)

Our Year 11 students have completed their two year programme of studies at Reaseheath College, we extend our heartfelt congratulations for their achievements. Special recognition goes to both students and staff for their dedication and perseverance. For our Year 10 students continuing their educational journey at Reaseheath, we applaud their hard work and commitment to their chosen field of study.

Our Adventure Learning programme continues to thrive, fostering invaluable skills and boosting students' confidence and self-esteem. From expedition training to outdoor activities like canoeing, these experiences enrich our students' lives and offer them opportunities for personal growth.

May I also take this opportunity to remind you that there is a rise in cases of Measles. The UKHSA state that anyone with symptoms that could be measles are advised to stay at home and phone their GP or NHS 111 for advice, rather than visiting the surgery or A&E. This is because measles spreads very quickly and easily and so it is important to try and prevent the illness spreading further. We have been advised by the UKHSA that you can check if your child is up to date with their MMR vaccinations by looking at their personal health record (Red Book) or by asking your GP.

As we embark on the Whitsun holiday, I wish you all a restful and rejuvenating break. May this time be filled with moments of joy and relaxation, preparing us for the adventures that lie ahead when we reconvene on **Monday, June 3rd 2024** for the final part of the Summer Term.

Warm regards

**Paul Scales**

**Principal**





# SUBJECTS & TOPICS

KAREN WOODALL, DEPUTY PRINCIPAL

Topics and Subjects for the Summer Term so you can begin some preparations, research or reading if you wish.

## Special Events and Curriculum Days - Dates for the Diary.

<b>Monday 10th June</b>	Open evening 3.45pm - 5.30pm.
<b>Wednesday 19th June</b>	Year 8 trip to The Big Bang Science & Technology Fair NEC Birmingham.
<b>Friday 21st June</b>	Middle Trip to The Big Bang Science & Technology Fair NEC Birmingham.
<b>Monday 24th June</b>	Secondary KS3 Science trip to Alton Towers.
<b>Tuesday 25th June</b>	Secondary KS4/5 Science trip to Alton Towers.
<b>Wednesday 26th June</b>	Donaldson & Shakespeare Science trip to Jodrell Bank.
<b>Friday 28th June</b>	Leavers Prom.
<b>Tuesday 2nd July</b>	Whole school parent's open evening 3.30pm-5.30pm.
<b>Tuesday 9th July</b>	Summer Festival afternoon.
<b>Wednesday 10th-Friday 12th July</b>	Duke of Edinburgh Expedition.

<b>Adventure Learning</b>	<b>Primary</b> Fridays PM – Petty Pool Outdoor Centre. <b>Middle</b> Fridays AM – Petty Pool Outdoor Centre. <b>Secondary</b> KS3 2nd July & KS4/5 16th July - Winsford Flash Canoeing.
---------------------------	---

# SUBJECTS & TOPICS

KAREN WOODALL, DEPUTY PRINCIPAL

...continued

Class	Subject and Topic Area
<b>Donaldson</b> Primary	<p><b>English</b> – Martin Waddell stories, writing narratives and real events. Spelling, punctuation and grammar, reading common exception words, pseudo words.</p> <p><b>Maths</b> – Number, measures, time, and geometry.</p> <p><b>Geography</b> – Non-European country study – Japan.</p> <p><b>Science</b> – Uses of everyday materials – Primary trip to Jodrell bank STEM.</p> <p><b>PSHE</b> – Diverse Britain and mental wellbeing.</p>
<b>Shakespeare</b> Primary	<p><b>English</b> - The Boy at the Back of the Class by Onjali Q. Rauf - newspaper reports, information texts, instructions - Links to refugees and Syria.</p> <p><b>Maths</b> – Time, shape, statistics.</p> <p><b>Science</b> - Living Things and their habitats - Life process and reproduction in humans and some animals.</p> <p><b>RE</b>- Christianity - Meaning and purpose.</p> <p><b>Art</b> – Mayan Civilization – Masks and clay vessels.</p> <p><b>Computing</b> - Data logging (Data logging - links to science)</p> <p><b>Humanities</b> – Mayan Civilisation - Geographical skills and fieldwork, maps, atlases, globes and digital/computer mapping to locate countries and describe features studied.</p>
<b>Darwin and Thompson</b> Middle	<p><b>Maths</b> - Place value, patterns and sequences, types of number (square, cube, prime, multiples and factors), standard form.</p> <p><b>English</b>– Reports and factual explanations based on ‘New Moon Service’</p> <p><b>Science</b> - Specialised cells.</p> <p><b>Geography</b> - Africa.</p> <p><b>Art</b> - African art.</p> <p><b>Computing</b> –Programming essentials in Scratch part 2.</p> <p><b>RE</b> - Religion through arts.</p> <p><b>Life skills</b> - Cooking (Pasta, Pizza/dough balls, Flapjacks, Tortillas and dips) and gardening.</p>

# SUBJECTS & TOPICS

KAREN WOODALL, DEPUTY PRINCIPAL

...continued

Secondary Class	Subject and Topic Area
English	<p><b>Gamma &amp; Lambda</b> – Studying the novel, “My Sister Lives on the Mantelpiece”</p> <p><b>Delta and Epsilon</b> – Studying the novel. “Noughts and Crosses”</p> <p><b>Omega &amp; Sigma</b> – GCSE Anthology poetry.</p>
Science	<p><b>Gamma &amp; Lambda</b> – Speed, pressure and work.</p> <p><b>Delta &amp; Epsilon</b> – Respiration, waves and photosynthesis.</p> <p><b>Omega &amp; Sigma</b> – Infection and response, energy, electricity.</p> <p><b>Pi</b> – Revision and exams.</p> <p><b>Theta</b> – Complete units.</p>
Maths	<p><b>Gamma &amp; Lambda</b> - The Data Handling Cycle and Measures of Location</p> <p><b>Epsilon &amp; Delta</b>- Probability and Algebraic Representation.</p> <p><b>Sigma &amp; Omega</b> - Circle theory, angles and bearings, and vectors.</p> <p><b>Theta &amp; Pi</b> - Revision.</p>
Food Btec	Summer recipes to showcase skills and techniques.
QoL/PSHE	<p>QoL/ASDAN continue challenges including research and presentation skills, gardening and cooking.</p> <p><b>Y11, 12 &amp; 13</b> NCS travel training and exploring the community.</p> <p>Physical and emotional health, personal hygiene and how to manage this.</p>
Media Studies	Year 2-Sound
Music	Production of promotional material and recording techniques.

# SUBJECTS & TOPICS

KAREN WOODALL, DEPUTY PRINCIPAL

...continued

Class	Subject and Topic Area
<b>Geography</b>	<b>KS3</b> -Farming in the UK, UK landscapes. <b>GCSE Options</b> -Natural Hazards, Tectonic Activity.
<b>History</b>	<b>Year 10</b> – Mon/Tues & Wed groups - Power and the People. <b>Year 10</b> – Thurs/Friday group - The Restoration <b>Year 9 Epsilon and Delta</b> – British Colonialism. <b>Year 8 Gamma and Lambda</b> - 19th Century working conditions
<b>RE</b>	<b>Y8 Gamma and Lambda</b> – Goodness in the world. <b>Y9 Epsilon and Delta</b> – What justifies our good decisions.
<b>German</b>	<b>Y7, Yr 8 Middle and primary</b> - Oracy skills. <b>Y9</b> - Tense and Grammar recap. <b>GCSE</b> - Ich liebe wien - Cultural unit on Vienna and focus of travel and tourism.
<b>PE</b>	<b>Primary</b> - Fundamentals <b>Middle</b> - Athletics <b>Secondary</b> - Athletics <b>BTEC</b> - Unit 1 Fitness for Sport
<b>Computer Science</b>	<b>KS3</b> - Programming using either Scratch or Python. <b>Y10s</b> have completed their work towards Entry Level certificate, now focussing on GCSE, looking a Boolean logic.
<b>Art and Design</b>	<b>KS3 Creative</b> - Pop Art, drawing techniques, use of Colour. <b>BTEC Year 1</b> - Unit 3, 2D project based on creating items for a street festival. <b>BTEC Year 2</b> - Unit 2, Externally set assignment around the theme of Travel.



# Safeguarding

Lorraine Clegg, Designated Safeguarding Lead



The students were asked to design the front of a safeguarding leaflet, representing what safeguarding means to them. These were then turned into leaflets, which include some helpful and important contact details.

**Here are a few examples from Primary, Middle and Secondary school.**



Safeguarding looks like a swirly colourful rainbow



Safeguarding sounds calm

Safeguarding smell like a swimming pool with a life guard watching over you



Safeguarding feels like a warm hug

Safeguarding tastes of popcorn

Safeguarding says "I'll save you"



**We have added a few links below that may be useful to your family:**

A family online-safety agreement example:

<https://www.socialworkerstoolbox.com/online-safety-agreement/>

Keeping information private on the internet, for Teens and pre-teens:

<https://www.socialworkerstoolbox.com/social-smarts-privacy-the-internet-and-you/>

A booklet to make with 6 – 12 year olds to help them understand and cope with their feelings:

[my-coping-toolbox-booklet.pdf \(educators-barnardos.org.uk\)](https://www.barnardos.org.uk/my-coping-toolbox-booklet.pdf)

What you need to know about online influencers:



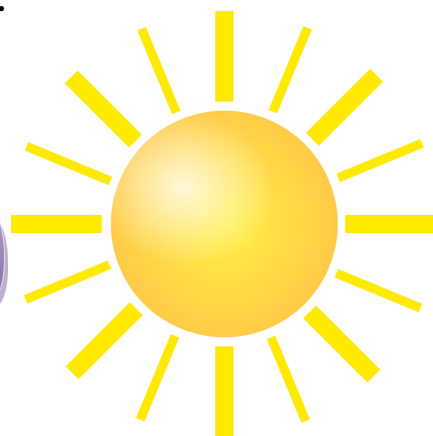


# Top tips to help you fall asleep

1. Consistent and calm bedtime routine
2. Electronics off 1 hour before bed
3. Music, reading a story or white noise
4. Use your bed just for sleeping
5. Know your own sensory preferences.



# Top tips to help you wake up



1. Don't rely on the snooze button
2. Curtains open or lights on straight away
3. Plan your day and what you want to achieve
4. Eat a good breakfast
5. Find time to exercise – maybe a short walk?



If you have any questions or want any more help with sleep, we, as a MAS team, are happy to help!



# Summer water safety

Accidents are mostly preventable with the correct knowledge and judgment and here are our tips to staying safe in the water during the summer:

To enjoy the water safely and make the right call...

- **Enter slowly and carefully**  
Think carefully about your ability to splash or swim in cold outdoor water. 49% of those who lost their life were classified as swimmers\*. Are you really a good swimmer?
- **Stay within reach**  
Don't go too far and stay within a standing depth.
- **Always be supervised**  
Over 70% of fatal accidents occur in the absence of professional supervision. Seek life guarded areas and always make sure some one is available to raise the alarm.

Summer is an amazing time to enjoy our beautiful waterways but we must be mindful that warmer weather is directly linked to an increase in fatal drowning incidents.

Rivers and Lakes/Lochs pose the greatest statistical risk as there are often hazards that the average person is equipped to handle and there is a lack of professional supervision.

In an emergency...

- **Call 999**  
Ask for the Fire and Rescue Service when inland and the Coastguard if at the coast. Don't enter the water to rescue.
- **If you're in trouble FLOAT and call for help**  
Fall in or become tired – stay calm, float on your back and call for help. Throw something that floats to somebody that has fallen in.



STOP AND THINK



STAY TOGETHER



CALL 999



FLOAT

# SUN SAFETY

## SUMMER SKIN PROTECTION



**WEAR  
BROAD HAT**



**USE SUNGLASSES**



**WEAR PROTECTIVE  
CLOTHING**



**AVOID SUN BETWEEN  
11 AM AND 3 PM**



**USE SUNSCREEN**



**DRINK MORE  
WATER**



**REFLECTION  
CAUTION**



**SEEK SHADE**



**AVOID DIRECT  
SUNLIGHT**



## **IMPORTANT.**

### **Reporting an Absence.**

The law requires parents or carers to ensure their child attends school regularly. Attendance at school is important and recent research shows pupils with the highest attainment have higher rates of attendance over the key stage.



**Please telephone school by 8.30 a.m. every morning your child is absent, and state the reason for the absence.**

Where possible, please make any Doctor, Dentist or Medical appointments either before or after school hours.

If appointments are during the school day please hand in a copy of your appointment card or letter to the school office, or alternatively, a screenshot.

Safeguarding children is everyone's responsibility, and it extends beyond the school gate so please talk to us and tell us why your child is not in school.

### **Attendance Matters at Church Lawton School.**

If you are struggling with your child attending school – we are here to help and offer support.

Good attendance at school is not just valuable, it's essential. Going to school is directly linked to improved exam performance which should in turn lead to further learning opportunities and better job prospects. As well as this, going to school helps to develop friendships and improve social interactions.

<https://assets.childrenscommissioner.gov.uk/wpuploads/2022/12/aaa-guide-for-parents-on-school-attendance.pdf>



### **IMPORTANT - Bringing Medication into School?**

Students needing medication during school hours both Prescribed and Non-Prescribed, need to have a permission slip completed by a parent or guardian.

Please contact your child's key worker or the school office for the consent form.



Medication needs to be handed in to an adult on arrival at school. If your child arrives by taxi please could you ring or email the school to notify us of medication coming into school.



## Summer 2024 Menus from Mellors Catering!

WEEK 1	MONDAY	TUESDAY	WEDNESDAY	THURSDAY	FRIDAY
Main dish	Vegetarian Chilli with Rice	Hot Dog with Oven Baked Potato Wedges	Roast Beef with Yorkshire Pudding, Roast Potatoes & Gravy	BBQ Chicken Panini with Diced Potatoes	Fish Fingers With Chunky Chips
Vegetarian Main dish	Cheese Naan Pizza with Diced Potatoes	Vegetable Stir Fry with Noodles	Vegetarian Sausage with Yorkshire Pudding, Roast Potatoes and Gravy	Tomato & Basil Pasta	Vegetarian Burger with Chunky Chips
Accompaniments	Corn on the Cob & Peas ..... Salad Bar	Mixed Vegetables ..... Salad Bar	Cauliflower & Cabbage ..... Salad Bar	Sweetcorn & Broccoli ..... Salad Bar	Peas & Baked Beans ..... Salad Bar
Desserts	Flapjack	Vanilla Sponge Cake	Chef's Biscuit	Cheese, Crackers & Grapes	Fruit & Jelly
Fresh fruit or yoghurt	Fresh fruit or Yoghurt	Fresh fruit or Yoghurt	Fresh fruit or Yoghurt	Fresh fruit or Yoghurt	Fresh fruit or Yoghurt
Jacket potato or sandwich selection	JP - Cheese/Beans/Tuna SW - Ham/Cheese/Tuna	JP - Cheese/Beans/Tuna SW - Ham/Cheese/Tuna	JP - Cheese/Beans/Tuna SW - Ham/Cheese/Tuna	JP - Cheese/Beans/Tuna SW - Ham/Cheese/Tuna	JP - Cheese/Beans/Tuna SW - Ham/Cheese/Tuna

WEEK 2	MONDAY	TUESDAY	WEDNESDAY	THURSDAY	FRIDAY
Main dish	Margherita Pizza with Baked Potato Wedges	All Day Breakfast: Sausage, Bacon, Hash Browns & Mini Omelette	Roast Chicken Breast & Roast Potatoes with Gravy	Meatballs in Tomato Sauce with Pasta	Breaded Fish Square & Chunky Chips
Vegetarian Main dish	Southern Style Quorn Burger With Baked Potato Wedges	Veggie Breakfast: Sausages, Hash Browns & Mini Omelette	Quorn Fillet and Roast Potatoes with Gravy	Cheese Panini with Diced Potatoes	Quorn Hot Dog & Chunky Chips
Accompaniments	Corn on the Cob & Peas ..... Salad Bar	Beans & Chopped Tomatoes ..... Salad Bar	Carrots & Parsnips ..... Salad Bar	Cauliflower & Broccoli ..... Salad Bar	Peas & Baked Beans ..... Salad Bar
Desserts	Banana Mousse	Blueberry Muffin	Ginger Biscuit	Apple Sponge Cake	Jelly & Fruit
Fresh fruit or yoghurt	Fresh fruit or Yoghurt	Fresh fruit or Yoghurt	Fresh fruit or Yoghurt	Fresh fruit or Yoghurt	Fresh fruit or Yoghurt
Jacket potato or sandwich selection	JP - Cheese/Beans/Tuna SW - Ham/Cheese/Tuna	JP - Cheese/Beans/Tuna SW - Ham/Cheese/Tuna	JP - Cheese/Beans/Tuna SW - Ham/Cheese/Tuna	JP - Cheese/Beans/Tuna SW - Ham/Cheese/Tuna	JP - Cheese/Beans/Tuna SW - Ham/Cheese/Tuna

WEEK 3	MONDAY	TUESDAY	WEDNESDAY	THURSDAY	FRIDAY
Main dish	Creamy Butternut Squash Pasta	Beef Burger with Baked Potato Wedges	Roast Gammon with Roast Potatoes and Gravy	Chicken Curry with Rice	Crispy Battered Fish and Chunky Chips
Vegetarian Main dish	Pizza with Diced Potatoes Marinated	Quorn Pitta with Baked Potato Wedges	Vegan Sausages with Roast Potatoes And Gravy	Vegetarian Meatballs & Pasta	Quorn Nuggets with Chunky Chips
Accompaniments	Peas & Sweetcorn ..... Salad Bar	Mixed Vegetables ..... Salad Bar	Cauliflower & Cabbage ..... Salad Bar	Broccoli & Carrots ..... Salad Bar	Peas & Baked Beans ..... Salad Bar
Desserts	Jelly & Fruit	Sticky Toffee Muffins	Chef's Biscuit	Lemon Sponge Cake	Strawberry Mousse
Fresh fruit or yoghurt	Fresh fruit or Yoghurt	Fresh fruit or Yoghurt	Fresh fruit or Yoghurt	Fresh fruit or Yoghurt	Fresh fruit or Yoghurt
Jacket potato or sandwich selection	JP - Cheese/Beans/Tuna SW - Ham/Cheese/Tuna	JP - Cheese/Beans/Tuna SW - Ham/Cheese/Tuna	JP - Cheese/Beans/Tuna SW - Ham/Cheese/Tuna	JP - Cheese/Beans/Tuna SW - Ham/Cheese/Tuna	JP - Cheese/Beans/Tuna SW - Ham/Cheese/Tuna

### Snack Time!

Mellors also have a good selection of snacks available to purchase every day during morning break.

All snack items currently cost 60p each.

Snack menu:

Toast \* Crumpet

Pancake \* Waffle

\* Pots of fruit



School dinner and snack payments should be made through your MCAS account in advance. Please do not allow your account to go in to arrears.

The current charge for a school meal is £2.55.

[www.mychildatschool.com/MCAS/MCSParentLogin](http://www.mychildatschool.com/MCAS/MCSParentLogin)

School ID: 12295

Whichever local authority you reside in, you can check your eligibility by contacting Cheshire East Local Authority:

Email: [freeschoolmeals@cheshireeast.gov.uk](mailto:freeschoolmeals@cheshireeast.gov.uk)

Telephone: 0300 123 5012

Even if you're not sure whether you are eligible or not, we urge you to check and inform school.



# Adventure Learning

Middle and Primary pupils have had an amazing time at The Social Farm this half term.

They have participated in various activities each week including feeding and bedding out the animals, pond dipping and seed sowing. The pupils have really enjoyed spending time with the animals; feeding the lambs, holding the chickens and hand feeding the goats.

They have also learnt lots of new skills including; making a bio-degradable bird feeder and making their own butter. They were then able to taste their own butter on a slice of bread.



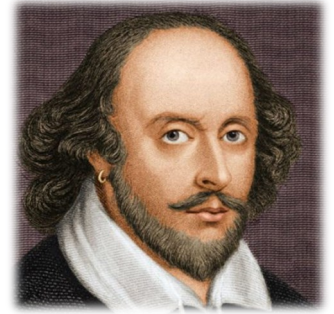
The Secondary pupils enjoyed their day at Petty Pool Outdoor Education Centre this half term. They had a go at the outdoor climbing wall, bushcraft and zipwire.







# Primary



This half term Donaldson class, have themed their learning around the topic of transport. In English they learnt about different modes of transport and sequenced events such as how to catch a train and bus. Shakespeare class have been reading 'The Boy at the back of the Class' and thinking about refugees. The children had to pretend they were crossing the Channel in a boat and consider how they might be feeling.

In maths, Donaldson have begun to focus on weight and measures, exploring different units of measure and ways which we measure in everyday life. Shakespeare class have learnt about perimeter, using regular and irregular shapes.

Shakespeare have also been using fabric paints to create stencil designs for their Mayan project and they have explored Happy Breathing in their My Happy Mind sessions.

Alongside our learning, we have been watching our sensory garden as it starts to bloom and bring exciting wildlife into school. We have been watching tadpoles in class and discovered facts about their life cycle. Shakespeare have dissected a flower and looked at the lifecycle of a chick. During Adventure Learning we put eggs in to an incubator and we are eagerly awaiting for them to hatch! Donaldson also had a lovely morning when they invited grandparents into school to enjoy games and share stories of their own experience of school.







# Middle



In science we explored the differences between plant and animal cells. We also used jelly and sweets to create a cross-section of a plant cell!

In Adventure Learning we are visiting the Social Farm. Here, we have fed the animals, made chicken feeders and seed balls, and have been pond dipping!

In our Life Skills sessions we have had the opportunity to learn some new recipes in food tech, and have been gardening in the new allotment.





# KS3



Year 9 have been learning about the digestive system in their science lessons.

In Epsilon we did some food tests to find out the nutritional content of the food we eat.

Delta have been busy making their own stuffed animals in creative, here is Will making a bunny!

Lambda have been learning all about ligaments and joints. In our experiment, we dissected a chicken wing to investigate!

In creative lessons, Year 8 have been learning about the work of Picasso. Here, Ted and Harry are using his style and Niamh is doing some research.



# KS4



Our students are all busy preparing for their exams, GCSEs and functional skills.

We would like to say a big well done to all our students who have worked so hard.

William completed his Level 1 assessment cooking a chicken korma which smelt wonderful. Charlie cooked a spaghetti bolognese and baked marbled muffins for his Level 2 which looked very professional, and Ben made Fish and Chips with crushed peas, which tasted delicious.

Kiera got a distinction in her exam and Luke got an impressive score in his mechanics exam. Zach worked very hard and independently with the rabbits, whilst Jake and Logan are learning about the different types of fitness testing and methods of training on their Btec PE course.

The year 10 students have almost completed their first year at Reaseheath College. We have two students on the catering course and one on the car mechanics course. Charlie received the award for 'Student of the Term' at the college which is a great achievement!

The year 11 students have completed their studies at Reaseheath. Tig has finished her Animal Management course and Victor has completed his Construction course.







As we adapt to the exam season, the students of Austen are demonstrating exceptional dedication and resilience. They are tackling their exams with great effort, managing the associated challenges fantastically well.

Alongside this, our students are also meeting numerous coursework deadlines, putting in tremendous effort to complete their work to the best of their ability. Their hard work and commitment are truly commendable, and they should be very proud of their accomplishments.

Some of our students have begun transition visits to the places they will be going after finishing Church Lawton School. While it will be sad to see them go, it is pleasing to see them gaining confidence in what will be their new environment.

Additionally, our students have been actively involved in developing our new school allotment, showcasing their teamwork and dedication to improving our school community.

**Keep up the fantastic work, Austen!**





# BTEC Level 1 & 2 Cookery

The BTEC Level 1 & 2 groups have chosen some of their favourite recipes to share with you this half term. We hope you enjoy cooking them at home.

## Macaroni Cheese



Ingredients	Equipment	Instructions
150g macaroni 400ml milk 50g flour 50g margarine 75g grated cheese Salt and pepper	Weighing scales Heatproof spoon Large saucepan Mixing bowl Whisk Colander Grater and chopping board Knife – not sharp	Bring a saucepan of water to the boil. Cook macaroni for 8-10mins.  Drain pasta then use the pan to melt the butter. Combine with flour slowly whisking.  Then add milk and cheese.  Combine together and bake for 20 minutes.

Ingredients	Equipment	Instructions
<b>Decoration</b> 25g brown sugar 25g margarine 1 tin of pineapple rings Glace cherries  <b>Cake Mixture</b> 100g SR flour 100g margarine 100g caster sugar 2 eggs	Cake tin Tablespoon Jug Scales Mixing bowl Small bowl Plate	Mix brown sugar and margarine.  Line tin with pineapple and cherry.  Whisk eggs then add to the mixture.  Add flour.  Pour over the pineapple.  Bake for 20 minutes.

## Pineapple Upside-down Cake



# Information

## Pre-Loved Uniform

We have set up a service providing free pre-loved uniform to our families. Our service relies on good quality donations from parents whose children have outgrown their uniform. Items we need include jumpers, cardigans, shirts, trousers, skirts, and blazers. If you have clothes you can donate, please take your items to the school reception.

## Leavers

As we approach the end of the school year, we are busy preparing for this year's Prom celebrations which will be supervised by school staff.

Information about the event:

**Venue:** Masonic Hall in Sandbach, CW11 1FJ  
**Date:** Friday 28<sup>th</sup> June 2024 Time: 7pm – 10pm  
**Dress code:** Formal

In line with the Department for Education guidance of attendance for students who are on roll at Church Lawton School and are aged either 16 (Year 11) or 18 (Year 13) by the end of August 2024 who are not continuing their education at Church Lawton School have the option to leave on **Friday 28<sup>th</sup> June 2024**. If your child is eligible, please refer to the letter sent to you at the beginning of May.

## Results Day

Year 11 and 13 results will be available on **15<sup>th</sup> and 22<sup>nd</sup> of August 2024** and a separate letter will be sent home detailing arrangements.





Supported Internship Open  
Evening 2024 Sandbach Town Hall  
Tuesday 21st May 5:30 - 7pm



# Supported Internship Information Evening

Are you a young person with SEND or a parent/carer of a young person, would like to know what options are available for you in the future?

## *When should I start planning for my future?*

Whether you are the young person or a parent/carer it is important to have information about and learn about planning your future from an early stage in life. **NOW** is the ideal time to learn more about the Supported Internship programme, it can give you the best opportunity of securing paid work at the end of education!

## *Who are Supported Internships for?*

A Supported Internship programme is for young people aged 16-24 who have an EHCP (Education Health and Care Plan). The programme is a pathway from education into the world of work. It is a wonderful opportunity to improve the life chances of young people with SEND by supporting them into sustained paid employment.

## *Why should you think about a Supported Internship?*

A Supported Internship can be the perfect programme/pathway for your final year of education. However, if you have the information about the programme from an early stage in life it will help you plan and make the right choices for your future.



It would be lovely to meet you, pop along to our Supported Internship Drop-in information session, where you will receive detailed information on how you can be supported by Cheshire East Local Authority, who will help link you in with local education providers, Find out which providers offer Supported Internships . Local Education Providers and Job Coaches who support young people on their Supported Internship journey at the event. They will offer advice, support, and answer any questions you may have. Learn what a Supported Internship is all about, what opportunities could be available and how you will be supported.

## *When:*

**Tuesday 21 May 2024**

**Where: Sandbach Town Hall (CW11 1AX)**

**Time: 5.30pm – 7pm**

Please book your place using the QR code above



# WELCOME TO MAPAC

We are delighted to be working with your school who have entrusted us with providing your children's school uniform.

## 1. HOW TO REGISTER & ORDER

- CLICK THE UNIFORM LINK FROM YOUR SCHOOLS WEBSITE...or...
- Visit [www.mapac.com/education/parents](http://www.mapac.com/education/parents) or search online for 'Mapac find your school'.
- Use the 'LOGIN/REGISTER' tab at the top of the page and fill in your details (even if you don't need to order straight away, it means you'll start receiving Mapac updates and offers!)
- Once on your dedicated school page, simply add everything you need to your basket, register (if you haven't already) and then check out.

## 2. ORDERING GUIDE

Under normal circumstances we aim for all orders to be sent out within 10-15 working days. During our busier periods (especially over the summer) or if anything unexpected occurs, it can take longer, so please allow us some extra time to get your order to you.

**Delivery to your home / work all year round!**

## IMPORTANT SUMMER ORDERING INFORMATION

**To receive your order before the start of term  
please order by 31st July.**

We do everything we can to send out all items as soon as possible but a high volume of orders or unforeseen circumstances may occasionally lead to delays.

If you have any queries, please do not hesitate to call or email us. We are happy to help!



## 2023/2024 School Calendar

### Autumn Term 2023 (open 72 days)

NASAT Training Days	Thursday 31 <sup>st</sup> August & Friday 1 <sup>st</sup> September 2023
INSET Days	Monday 4 <sup>th</sup> September 2023 Tuesday 5 <sup>th</sup> September 2023
School Opens	Wednesday 6 <sup>th</sup> September 2023
School Closes	Friday 20 <sup>th</sup> October 2023
Half Term	23 <sup>rd</sup> October – 27 <sup>th</sup> October 2023
School Opens	Monday 30 <sup>th</sup> October 2023
School Closes	Thursday 21 <sup>st</sup> December 2023
INSET Days	Friday 22 <sup>nd</sup> December 2023
Christmas Holiday	25 <sup>th</sup> December 2023 – 5 <sup>th</sup> January 2024

### Spring Term 2024 (open 54 days)

School Opens	Monday 8 <sup>th</sup> January 2024
School Closes	Friday 16 <sup>th</sup> February 2024
Half Term	19 <sup>th</sup> February 2024 – 23 <sup>rd</sup> February 2024
School Opens	Monday 26 <sup>th</sup> February 2024
School Closes	Thursday 28 <sup>th</sup> March 2024
Easter Holiday	29 <sup>th</sup> March 2024 – 12 <sup>th</sup> April 2024

### Summer Term 2024 (open 64 days)

School Opens	Monday 15 <sup>th</sup> April 2024
May Bank Holiday Monday	Monday 6 <sup>th</sup> May 2024
School Closes	Friday 24 <sup>th</sup> May 2024
Half Term	27 <sup>th</sup> May 2024 – 31 <sup>st</sup> May 2024
School Opens	Monday 3 <sup>rd</sup> June 2024
School Closes	Friday 19 <sup>th</sup> July 2024
INSET Days	Monday 22 <sup>nd</sup> July & Tuesday 23 <sup>rd</sup> July 2023

## 2024/2025 School Calendar

### Autumn Term 2024 (open 72 days)

INSET Days	Monday 2 <sup>nd</sup> - Tuesday 3 <sup>rd</sup> September 2024
School Opens	Wednesday 4 <sup>th</sup> September 2024
School Closes	Friday 25 <sup>th</sup> October 2024
Half Term	28 <sup>th</sup> October – 1 <sup>st</sup> November 2024
School Opens	Monday 4 <sup>th</sup> November 2024
School Closes	Thursday 19 <sup>th</sup> December 2024
INSET Day	Friday 20 <sup>th</sup> December 2024
Christmas Holiday	23 <sup>rd</sup> December 2024 – 3 <sup>rd</sup> January 2025

### Spring Term 2025 (open 60 days)

School Opens	Monday 6 <sup>th</sup> January 2025
School Closes	Friday 14 <sup>th</sup> February 2025
Half Term	17 <sup>th</sup> February 2025 – 21 <sup>st</sup> February 2025
School Opens	Monday 24 <sup>th</sup> February 2025
School Closes	Friday 4 <sup>th</sup> April 2025
Easter Holiday	7 <sup>th</sup> April 2025 – 21 <sup>st</sup> April 2025

### Summer Term 2025 (open 58 days)

School Opens	Tuesday 22 <sup>nd</sup> April 2025
May Bank Holiday Monday	Monday 5 <sup>th</sup> May 2025
School Closes	Friday 23 <sup>rd</sup> May 2025
Half Term	26 <sup>th</sup> May 2025 – 30 <sup>th</sup> May 2025
School Opens	Monday 2 <sup>nd</sup> June 2025
School Closes	Friday 18 <sup>th</sup> July 2025
INSET Days	Monday 21 <sup>st</sup> July & Tuesday 22 <sup>nd</sup> July 2025