

February 2024

NEWSLETTER

Church Lawton School, Cherry Tree Avenue, Church Lawton,
Stoke-on-Trent, Staffordshire. ST7 3EL



PRINCIPAL NOTES

Dear Parents and Carers,

As we reflect on the first half of this academic year, it is with great pride and satisfaction that I share with you the remarkable achievements and progress made by our students here at Church Lawton School. In this edition of our newsletter, I am thrilled to highlight some of the notable accomplishments and ongoing initiatives within our vibrant school community.

Swimming Success.

Our Primary and Middle School students have been making waves - quite literally - in their swimming lessons this half term. With dedication and determination, they have been honing their skills and building their endurance in the water. The feedback from our swimming teachers has been nothing short of excellent, and our students have truly been a testament to their hard work and commitment.

Continued Education Pathways.

Our Year 10 and 11 students have been diligently pursuing their courses at Reaseheath College, demonstrating unwavering dedication and resilience in their studies. As our Year 11 students work towards the completion of their respective two-year studies, we couldn't be prouder of their continued hard work and commitment to their educational journey.

Upcoming Assessments.

As we approach the second half of the Spring Term we are gearing up for our programme of mock SATs exams for all Year 6 students, as well as GCSE and BTEC exams for our Year 11, 12, and 13 students. These assessments are crucial milestones in our students' academic progression, and we are dedicated to providing them with the support and resources they need to excel.

PRINCIPAL NOTES

(Continued...)

Enriching Experiences.

Our BTEC music group recently embarked on a memorable trip to Foxbarn Recording Studio, which served as a central focus for their research and development in their course. Such enriching experiences not only enhance our students' academic learning but also foster their creativity and passion for their chosen fields of study.

Celebrating Achievement.

A heartfelt congratulations to the eight students who were recently awarded their Bronze Duke of Edinburgh Award. This prestigious achievement is a testament to their dedication, perseverance, and resilience. It is incredibly rewarding to see that many of these students have now progressed onto the Silver Award, demonstrating their ongoing commitment to personal development and growth.

Professional Development.

I am pleased to announce that several members of our staff have embarked on Post-graduate qualifications in Autism Studies. We extend our best wishes to them as they pursue their academic endeavours and contribute to enhancing our school's expertise in supporting students with autism.

Collaborative Outreach.


I am delighted to share that Church Lawton School has been actively collaborating with special schools across Cheshire East to provide outreach support to other Primary and Secondary schools. This collaborative effort aims to enhance autism education and learning strategies, ensuring that students with autism receive the tailored support they need to thrive in diverse educational settings.

As we look ahead to the remainder of the academic year, I am filled with optimism and enthusiasm for the continued progress and achievements of our students. Together, as a supportive school community, we will continue to nurture and empower every student to reach their fullest potential.

Thank you for your ongoing support and dedication to the success of our students.

Warm regards

Paul Scales



Principal

IMPORTANT NOTICE

Measles Reminder - Getting Children Vaccinated.

The UK Health Security Agency (UKHSA) has announced a national incident following the continued rise in Measles cases.

Laboratory identified cases are particularly high in London and the West Midlands with cases highest in children under 10.

The cases are related to low take-up of the MMR vaccine. The NHS state that Measles is highly contagious and can lead to complications such as ear infections, pneumonia, and inflammation of the brain which can require hospitalisation and on rare occasions can lead to long term disability or death. Spending 15 minutes or more in direct contact with someone infected with measles is enough to catch the infection. People whose immunity is compromised, pregnant women and unvaccinated children are at increased risk.

Measles symptoms to be aware of include:

<ul style="list-style-type: none">- High fever.- Sore, red, watery eyes.- Coughing.	<ul style="list-style-type: none">- Aching and feeling generally unwell.- A blotchy red brown rash, which usually appears after the initial symptoms.
---	--

Did you know that if your child is identified as a close contact to a measles case and they do not have satisfactory vaccination status they may be asked to self-isolate for up to 21 days. This could mean not attending school or childcare for up to 21 days.

Children who are fully vaccinated do not need to be excluded from school or childcare.

The UKHSA state that anyone with symptoms that could be measles are advised to stay at home and phone their GP or NHS 111 for advice, rather than visiting the surgery or A&E. This is because measles spreads very quickly and easily and so it is important to try and prevent the illness spreading further.

We have been advised by the UKHSA that you can check if your child is up to date with their MMR vaccinations by looking at their personal health record (Red Book) or by asking your GP.

For more information about measles please check here:

<https://www.nhs.uk/conditions/measles/>

For more information about the MMR vaccination please check here:

<https://www.nhs.uk/conditions/vaccinations/mmr-vaccine/>



SUBJECTS & TOPICS

KAREN WOODALL, DEPUTY PRINCIPAL

Here are some of the topics for classes and subjects for the Spring Term so you can begin some preparations, research or reading if you wish.

Special Events and Curriculum Days—Dates for the Diary.

26th February 2024	Secondary PSHE Day covering Extremism, Gang culture & Coercive behaviour.
27th February 2024	Secondary Geography Trip To Nantwich Town Centre (Please ensure you consent via MCAS)
W/C 4th and 11th March 2024	Mock GCSE and Functional Skills.
Monday 25th March 2024	Primary & Middle School Family Easter Bingo 1.30pm—2.30pm.
Tuesday 26th & Wednesday 27th March 2024	Parents evenings by appointment from 3.30pm. Further details to follow.

Adventure Learning	<p>Primary Friday afternoons - Swimming at Crewe leisure centre.</p> <p>Middle Thursday afternoons – Swimming at Alsager leisure centre.</p> <p>Secondary – Cheshire Outdoors – Tuesday 26th March .</p>
---------------------------	---

Class	Subject and Topic Area
Donaldson Primary	<p>Topic— Springtime, growing and minibeasts.</p> <p>Maths – Times tables 2, 5 & 10, division numbers beyond 100.</p> <p>English – Reading and writing about stories.</p> <p>Science – Animals including humans, keeping healthy and our bodies.</p> <p>Geography – The world’s seven continents and five oceans, characteristics of four countries and capital cities of the UK.</p>
Shakespeare Primary	<p>Art – Aboriginal, signs and symbols.</p> <p>English – Poetry.</p> <p>Maths– Decimals and percentages.</p> <p>Computer science – Photo editing.</p> <p>Science - Electricity.</p> <p>Geography- Economic activity-understanding trade.</p> <p>RE- Christian values and commitment.</p>



SUBJECTS & TOPICS

KAREN WOODALL, DEPUTY PRINCIPAL

Subjects and topics continued below. Please feel free to begin some preparations, research or reading if you wish.

Class	Subject and Topic Area
<p>Darwin and Thompson Middle</p>	<p>Maths – Y6- fractions, decimals, percentages, developing long multiplication and division, mental arithmetic. Y7-lines, angles, algebraic equations.</p> <p>English- Poetry: poetic language (similes, metaphors, onomatopoeia) and different poetic types (Haiku), Shakespeare. Knowledge about language: how language changes over time, vocab building, word origins, slang, formal/informal.</p> <p>Science - Parts of a plant and plant reproduction.</p> <p>Geography- Glaciers: what are they and how are they formed? Rivers: landforms created by a river.</p> <p>RE- What happens when we die and other BIG Questions.</p> <p>Art- Natural form- line, perspective, composition.</p> <p>Computing- Programming essentials, control and motion events using BBC Micro:Bit.</p> <p>Music - Songwriting and Composition with ukulele.</p>
<p>English Secondary</p>	<p>Y8 Gamma - The Supernatural (non-fiction reading)</p> <p>Y9 Delta and Epsilon - Blood Brothers.</p> <p>KS4 Omega, Kappa and Sigma - Macbeth.</p> <p>KS4/5 Pi - English Language Paper 1 and 2.</p> <p>KS4/5 Theta – Functional skills Level 1 and 2.</p>
<p>Science Secondary</p>	<p>Y8 Gamma - Metals and non metals, gravity and contact forces.</p> <p>Y9 Delta and Epsilon - Evolution, inheritance and breathing.</p> <p>KS4 Omega, Kappa and Sigma - Enzymes, Coronary Heart disease, Organisation & Quantitative Chemistry.</p> <p>KS4/5 Pi - Revision and going through the CGP workbooks.</p> <p>KS4/5 Theta - Entry Level Topic 2 -Biological inheritance.</p>



SUBJECTS & TOPICS

KAREN WOODALL, DEPUTY PRINCIPAL

Subjects and topics continued below. Please feel free to begin some preparations, research or reading if you wish.

Class	Subject and Topic Area
Maths Secondary	Gamma – Collecting and representing Data and Algebraic manipulation. Delta & Epsilon – Circumference and Area and Equations Omega, Sigma and Kappa - Simultaneous Equations and Probability. Theta – Functional skills/GCSE preparation. Pi - Revision.
Food Btec	Level 1 and Level 2 preparation for cooking assessment. A range of recipes to showcase skills and techniques.
QOL	ASDAN challenges including research and presentation skills. Y11, 12 & 13 NCS projects, including cabaret and cake sale event. Physical and mental health and how to manage this.
Media Studies	Year 2 – Creating an advert.
Geography	KS3 – Gamma, Delta, and Epsilon groups - Acid Rain and Global Warming, Pollution, Farming and Soil Erosion, Earning a Living, Economy and Employment. KS4/5 Option group - Geographical applications, Issue evaluation, Selecting, measuring and recording data appropriate to the chosen enquiry, selecting appropriate ways of processing, presenting, describing, analysing and explaining, fieldwork data.
RE	Y8 Gamma – Human rights. Y9 Epsilon and Delta – Prejudice and discrimination.
German	Primary and Middle – Hobbies. Year 8 - My town. Year 9 – Technology. GCSE – House and home.
Careers	Middle school - Interview skills; personal finance and budgeting. KS3 - Money and Finance in the workplace. KS4 & 5 - Possible College taster days and University visits before Easter.



SUBJECTS & TOPICS

KAREN WOODALL, DEPUTY PRINCIPAL

Subjects and topics continued below. Please feel free to begin some preparations, research or reading if you wish.

Class	Subject and Topic Area
History	<p>Year 11 - Revision.</p> <p>Year 10 - Conflict: The Gulf and Afghanistan 1990-2009 & Medieval England 1272-1307.</p> <p>Year 10 - Self Study - Russia 1894-1945 Tsarism to Communism.</p> <p>Year 9 Epsilon and Delta - Colonial Africa.</p> <p>Year 8 Gamma - Seventeenth century Britain.</p>
Music	<p>Primary and Middle school - Working on reading and writing pentatonic melodies with chords which we can read and write with notation and play on our ukuleles.</p> <p>Secondary KS3 - How to read and write chords and melodies with notation, playing them on various instruments and recording audio/MIDI using Logic Pro X on the iMacs.</p> <p>BTEC - Music Promotion and recording techniques, producing an EP in the studio.</p>
PE	<p>Primary - Games - Manipulation of objects.</p> <p>Middle school - Net / wall games.</p> <p>Secondary - Net / wall tennis and badminton and Invasion games handball.</p> <p>BTEC - Unit 6 Leading Sports Activities.</p>
Computer Science	<p>KS3 - digital media, from audio to graphics to video: how it works, how to create it, and how to edit it.</p> <p>KS4 GCSE - Revision.</p> <p>KS4 Entry Level students are planning and creating their required programming project: a text-based adventure game."</p>
Art and Design	<p>Secondary KS3 Creative - Abstract Art, printmaking, textiles, animation, 3D project</p> <p>GCSE Photography - Experimental photography.</p> <p>BTEC Year 1 - Textiles. The theme is Aquatic World.</p> <p>BTEC Year 2 - Unit 4, completing 3D installation project.</p>

Safeguarding



THE GOING VIRAL SPIRAL

Childnet International

No way she posted that
1 hour ago

Who would let that pic be online
1 hour ago

Attention seeker!
1 hour ago

More please!
1 day ago

How embarrassing
30 minutes ago

She's gonna flip when she sees that
1 hour ago

Like it!
2 hours ago

Ha ha. Thanks for sharing
6 hours ago

I think I know that girl
6 hours ago

Wonder if she knows how many people have seen it?
7 minutes ago

Everyone knows THAT girl!
Just now

SHARE WITH RESPECT

On social media think about...
...what you share,
...who you share it with,
...who might see it in the future,
...how it makes you and others feel,
...what impression it gives.

UK Safer Internet Centre
Co-financed by the European Union
Connecting Europe Facility
Childnet International © 2018
Registered charity no. 1080173
www.childnet.com

Please see the attached Smartphone Safety Tips PDF for further information.

IMPORTANT.

Reporting an Absence.

The law requires parents or carers to ensure their child attends school regularly. Attendance at school is important and recent research shows pupils with the highest attainment have higher rates of attendance over the key stage.



Please telephone school by 8.30 a.m. every morning your child is absent, and state the reason for the absence.

Where possible, please make any Doctor, Dentist or Medical appointments either before or after school hours.

If appointments are during the school day please hand in a copy of your appointment card or letter to the school office, or alternatively, a screenshot.

Safeguarding children is everyone's responsibility, and it extends beyond the school gate so please talk to us and tell us why your child is not in school.

Attendance Matters at Church Lawton School.

Good attendance at school is not just valuable, it's essential. Going to school is directly linked to improved exam performance which should in turn lead to further learning opportunities and better job prospects. As well as this, going to school helps to develop friendships.

Here is a handy guide for deciding if your child is well enough for school: -

<https://www.nhs.uk/live-well/is-my-child-too-ill-for-school/>



IMPORTANT - Bringing Medication into School?

Students needing medication during school hours both Prescribed and Non-Prescribed, need to have a permission slip completed by a parent or guardian.

Please contact your child's key worker or the school office for the consent form.

Medication needs to be handed in to an adult on arrival at school. If your child arrives by taxi please could you ring or email the school to notify us of medication coming into school.





Spring 2024 Menus from Mellors Catering!

Please note that there will be a small price increase in both snacks and lunches from April 2024. New prices will be notified after half term.

WEEK 1	MONDAY	TUESDAY	WEDNESDAY	THURSDAY	FRIDAY
Main dish	Macaroni cheese	Homemade Meat & Potato Pie with Diced Potatoes	Roast beef, with Yorkshire pudding, roast potatoes & gravy	Chicken korma with 50/50 rice	Fish Fingers With Chunky Chips
Vegetarian Main dish	Vegetable stir fry with chicken style pieces and 50/50 rice	Vegetarian bolognese	Vegetarian Sausage with Yorkshire Pudding, Roast Potatoes and Gravy	Sweet potato, cheese & onion pie with new potatoes	Vegetarian burger with chunky chips
Accompaniments	Corn on the Cob & Peas Salad Bar	Green Beans & Carrots Salad Bar	Cauliflower & Cabbage Salad Bar	Sweetcorn & Broccoli Salad Bar	Peas & Baked Beans Salad Bar
Desserts	Fruit crumble & custard	Flapjack	Cheese & crackers with grapes	Marble sponge & custard	Fruit in jelly
Fresh fruit or yoghurt	Fresh fruit or Yoghurt	Fresh fruit or Yoghurt	Fresh fruit or Yoghurt	Fresh fruit or Yoghurt	Fresh fruit or Yoghurt
Jacket potato or sandwich selection	JP – Cheese/Beens/Tuna SW – Ham/Cheese/Tuna	JP – Cheese/Beens/Tuna SW – Ham/Cheese/Tuna	JP – Cheese/Beens/Tuna SW – Ham/Cheese/Tuna	JP – Cheese/Beens/Tuna SW – Ham/Cheese/Tuna	JP – Cheese/Beens/Tuna SW – Ham/Cheese/Tuna

WEEK 2	MONDAY	TUESDAY	WEDNESDAY	THURSDAY	FRIDAY
Main dish	Margherita pizza with baked potato wedges	Mexican chilli with 50/50 rice	Roast Chicken & Roast Potatoes with Gravy	Traditional cottage pie	Breaded Fish Square & Chunky Chips
Vegetarian Main dish	Chickpea & vegetable curry with 50/50 rice	Creamy butternut squash pasta	Quorn Fillet and Roast Potatoes with Gravy	Vegetarian meatballs with pasta	Cheese & bean bake with chunky chips
Accompaniments	Corn on the Cob & Peas Salad Bar	Roasted Vegetables Salad Bar	Carrots & Parsnips Salad Bar	Cauliflower & Broccoli Salad Bar	Peas & Baked Beans Salad Bar
Desserts	Chocolate brownie	Ginger biscuit	Chocolate & orange muffins	Fruit sponge & custard	Bananas & custard
Fresh fruit or yoghurt	Fresh fruit or Yoghurt	Fresh fruit or Yoghurt	Fresh fruit or Yoghurt	Fresh fruit or Yoghurt	Fresh fruit or Yoghurt
Jacket potato or sandwich selection	JP – Cheese/Beens/Tuna SW – Ham/Cheese/Tuna	JP – Cheese/Beens/Tuna SW – Ham/Cheese/Tuna	JP – Cheese/Beens/Tuna SW – Ham/Cheese/Tuna	JP – Cheese/Beens/Tuna SW – Ham/Cheese/Tuna	JP – Cheese/Beens/Tuna SW – Ham/Cheese/Tuna

WEEK 3	MONDAY	TUESDAY	WEDNESDAY	THURSDAY	FRIDAY
Main dish	Quorn™ lasagne with herb bread	Beef burger with baked potato wedges	Roast Gammon with Roast Potatoes and Gravy	Chicken & tomato pasta bake	Crispy battered fish & chunky chips
Vegetarian Main dish	Vegetable tikka masala with 50/50 rice	Marinated Quorn™ pitta with baked potato wedges	Vegan sausage & mash potato with gravy	Vegetable & bean chilli with 50/50 rice	Quorn™ nuggets with chunky chips
Accompaniments	Peas & Sweetcorn Salad Bar	Roasted Vegetables Salad Bar	Cauliflower & Cabbage Salad Bar	Broccoli & Carrots Salad Bar	Peas & Baked Beans Salad Bar
Desserts	Oaty jam squares	Apple pie with custard	Lemon cake	Sticky toffee pudding with custard	Fresh fruit & whip
Fresh fruit or yoghurt	Fresh fruit or Yoghurt	Fresh fruit or Yoghurt	Fresh fruit or Yoghurt	Fresh fruit or Yoghurt	Fresh fruit or Yoghurt
Jacket potato or sandwich selection	JP – Cheese/Beens/Tuna SW – Ham/Cheese/Tuna	JP – Cheese/Beens/Tuna SW – Ham/Cheese/Tuna	JP – Cheese/Beens/Tuna SW – Ham/Cheese/Tuna	JP – Cheese/Beens/Tuna SW – Ham/Cheese/Tuna	JP – Cheese/Beens/Tuna SW – Ham/Cheese/Tuna



Mellors also have a good selection of snacks available to purchase every day during morning break.

All snack items currently cost 50p each.

Snack menu:

Toast * Crumpet

Pancake * Waffle

* Pots of fruit



School dinner and snack payments should be made through your MCAS account in advance. Please do not allow your account to go in to arrears.

The current charge for a school meal is £2.40.

www.mychildatschool.com/MCAS/MCSParentLogin

School ID: 12295



Whichever local authority you reside in, you can check your eligibility by contacting Cheshire East Local Authority:

Email: freeschoolmeals@cheshireeast.gov.uk

Telephone: 0300 123 5012

Even if you're not sure whether you are eligible or not, we urge you to check, as not only will it benefit your child, it also benefits school.



Adventure Learning

A fun half term to start the year of 2024!

Middle School pupils have been visiting Alsager Leisure centre and Primary pupils have been visiting Crewe Lifestyle Centre for swimming lessons. All pupils have continued to build confidence in the water, improve their swimming strokes and most of all, finding enjoyment in being in the water! We have some excellent, strong swimmers; Well done to those who were awarded Swimmer of the Week!

Next half term

Donaldson and Shakespeare will continue swimming at Crewe Lifestyle Centre.

Darwin and Thompson will continue swimming at Alsager Leisure Centre.



Secondary students had a great time at Kilnworx Climbing Centre this half term.

Their confidence grew throughout the day and most went on to have a go at bouldering which was lots of fun!

They were taught various techniques for example, the 'figure 8' knot and they helped to belay each other.



Donaldson



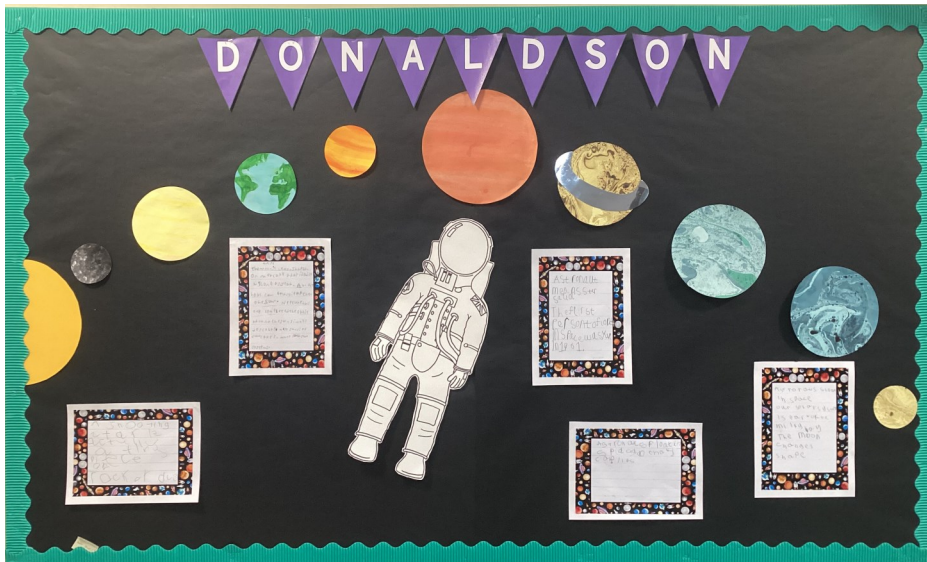
In Donaldson we have zipped up our spacesuits and prepared for blast off as our space topic reaches warp speed!

Take a look at our solar system artwork!



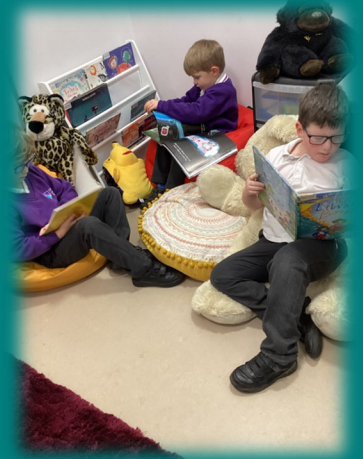
We used oil pastels and chinks to create planets, moons and stars and blended them to make exciting, vibrant space images.

This linked to our non fiction writing about space exploration and our Milky Way Galaxy.

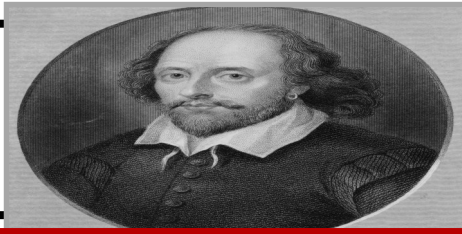


In Maths we have been reading the time and recently moved onto methods of addition and subtraction, using our knowledge of number facts and inverse calculations.

Our new reading area is out of this world!



Shakespeare



In Shakespeare this half term we have been busy welcoming new students to the class and enjoying a range of topics.

In English the children have created their own Alien planets.

Children then wrote a diary log of themselves as astronauts discovering the planet, using their best descriptive language.



In Maths we have been working on word problems involving fractions. We have used the operations multiplication and division and recognised inverse.

Science has been about Earth and space. We have focused on the movement of the planets in relation to the sun and moon and the phases of the moon.



Other lessons we have enjoyed include Geography and Art, where we looked at the river systems and painted our own landscape pictures.



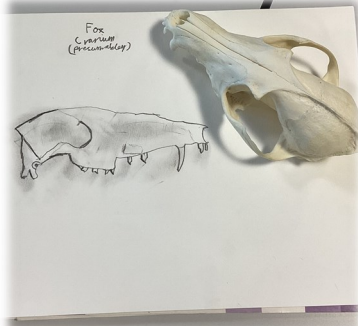


Darwin & Thompson



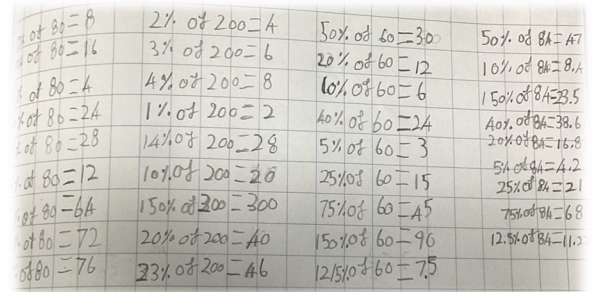
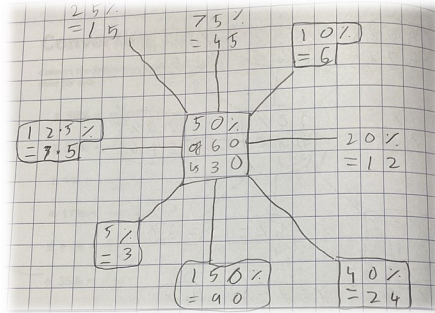
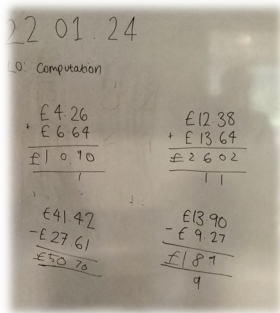
Art always creates a lovely ambience in the room. This term we are looking at some of the skills of art such as line, shape and form, composition, perspective and light and shadow.

The students' observational drawings have been amazing.



In Maths we have split the children by Year Group so that Year 6 can really focus on the areas they need to for their SAT's; whilst Year 7 explore the relationship between fractions, decimals and percentages.

There has also been another look at improving our mental arithmetic, although it's not always necessary to add numbers in columns - grab a calculator or ask Alexa!



In English we have used 'Our Day Out' by Willie Russell as the inspiration for our work. It is a popular play (later made into a film and musical). A SEN class of children from a poor area of Liverpool take a day trip to Conwy Castle, but they aren't always well behaved. It's not only lead to some super script writing, but an opportunity to compare school then and now. As we move through the term we will also look at other plays and playwrights.



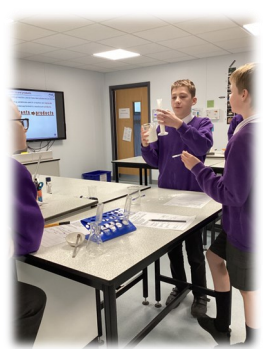


Darwin & Thompson

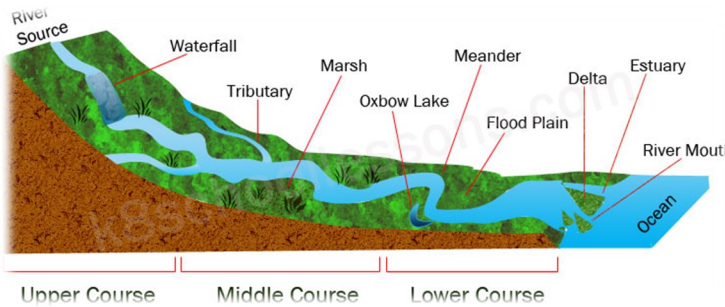


In Science we have been finding out about acids and alkalis. We have measured the acidity of different substances using a PH scale. Objects that are not very acidic are called basic.

The scale has values ranging from zero (the most acidic) to 14 (the most basic).

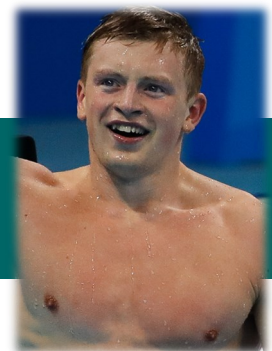
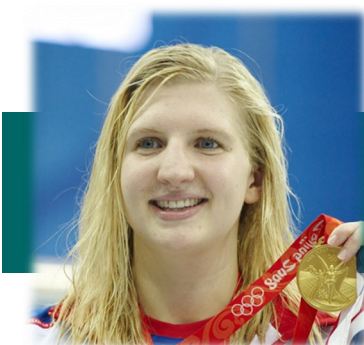


Humanities has a Geography focus this term– Rivers. We are learning about the features of a river from its source to the estuary; and the human uses of a river or canal. Of course, some rivers flow through very deep canyons or valleys so we've also had to learn a little bit about glaciers causing u-shaped and V-shaped valleys through which a mis-fit river flows.



Adventure Learning has been swimming at Alsager leisure centre. There's no photos here, but all the students are attending each week with the aim of being able to swim a minimum 25m by the end of this term. Swimming isn't just a fantastic sport, it is also a potential life saver!

Can you name the famous Olympic swimmers below?





Welcome to our first Attenborough Newsletter of 2024.

Its been quite a busy start to 2024. We have had Mock exams, Adventure Learning at Kilnworx, PSHE day on Black History, New Prefects and we now have a Head boy and Head girl.

In science our students have built small circuits using batteries, bulbs and switches and learned about Volts, Amps and Resistance measurements.



Our Year 9 students have the opportunity to go to Reaseheath College next September and some attended an introduction day where they could look around the vast campus and see the facilities the college has to offer. Among the courses offered are Animal Management, Construction and Car Mechanics.

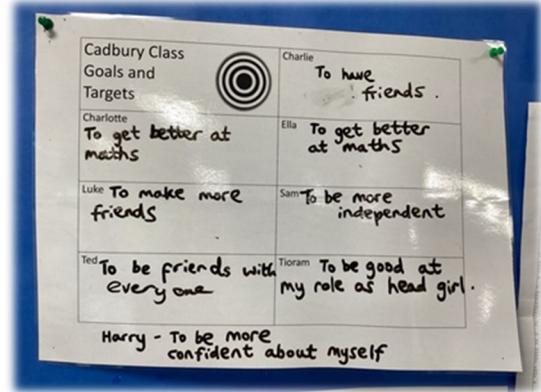


At Kilnworx our students enjoyed climbing and bouldering. They appreciated the demanding nature of this activity and the break from normal studies.

Cadbury

Cadbury class have continued to work together to think about different forms of bullying and how we can help to prevent it in our QOL lessons.

The students have also come up with their own personal targets for the term.



We have been continuing with sensory circuit activities, with the students setting themselves more challenging agility and accuracy skill activities.

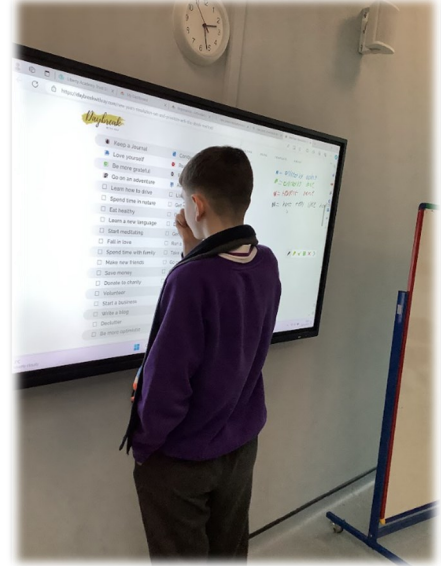


Last term we enjoyed our Adventure Learning trip to Stoke Ski Centre and this term we've been to Kilnworx Climbing Centre.



Matthews

Matthews class has embarked on a wonderful half-term journey so far. We've contemplated our New Year's Resolutions and explored our new Quality of Life (QoL) targets.



Friendships are growing and there is often the sound of laughter coming from Matthews form.

We have extended a warm welcome to two new students.

Jake and Elliott are settling in fantastically, making new friends and becoming part of the group.



Message from Miss Lilley:

I am changing to part-time hours at Church Lawton School. I will be in school on a Monday and Tuesday. On the remaining three days, I will be working as a Spanish consultant.



Nightingale



We Hope you all had a wonderful Christmas!

As we enter into the New Year, our students are settling in well.

Some of our form have won trophies in Assembly for being Star Pupils.

These are awarded for having a positive attitude towards learning.



Each half term we take part in Adventure Learning.

This term we went to Kilnworx where the students got the chance to participate in climbing and bouldering.

This Was great fun, and the students showcased their amazing adventurous climbing skills.



BRANSON

Welcome to the first Branson newsletter of 2024.

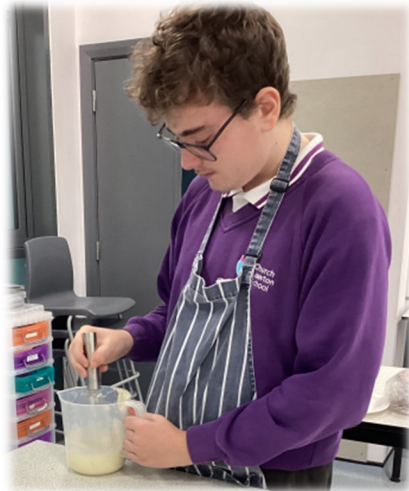
Branson have been consolidating their learning and participated in numerous activities this half term, including Black History Month in our PSHE session. We have also had a senior prefect nominated from the form.

Harry has proudly collected his Duke of Edinburgh Bronze Award after raising a magnificent £162 for the Alzheimer's Society.

To the right is a cutting from the Congleton Chronicle reporting on our students success on the D of E Scheme.

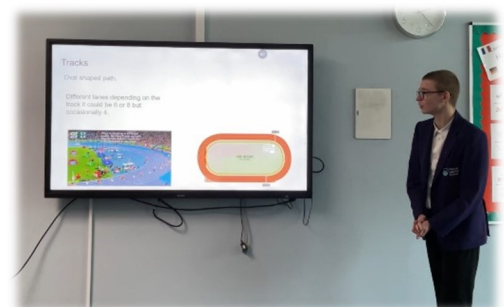
Charlie preparing food in his BTEC cookery lesson.

Charlie is undertaking a catering course at Reaseheath College.



Victor is seen here presenting his Running topic during his English lesson.

He regularly runs around 7km with his Father in the morning before school.





Newton

This half term has been a busy time for Newton. We have in our form Head Boy, and three Prefects. This is an amazing responsibility and opportunity for them. Both Ebony and Ben have also been presented with their Duke of Edinburgh Bronze Award. A big well done to them all!



Tobie our Head.



William our Prefect.



Ebony Prefect & DofE Bronze Award.

We enjoyed our Adventure Learning trip out to Kilnworx, Staffordshire's newest and largest indoor climbing centre with over 105 routes equipped for top rope, lead & sport climbing, complete with traversing wall, abseil stations and slackline.

We had a great time!



Ben Prefect & DofE Bronze Award.



Ebony and Charlie on their Animal Management course at Reaseheath College working with the Capybaras.

We have also introduced oracy assemblies every Monday, where students are given a topic to debate, and they can practice their speaking and listening skills. This is a vital attribute for our students to develop for their future.

Austen

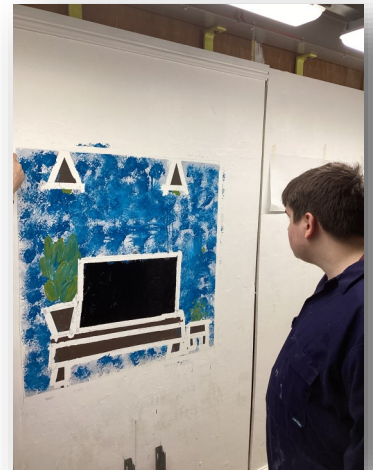
In the bustling world of Austen Form, our students continue to shine in various endeavours. We're delighted to share some remarkable achievements from our talented students.

Joey's Remarkable Work Experience at the Stables.

Joey has truly embraced her work experience at Summerford Stables. From diligently cleaning the stables to confidently tacking the horses, Joey has showcased a commendable work ethic. Not only did she contribute to the daily operations, but she also displayed courage by taking the reins and enjoying the thrill of horseback riding. Joey's commitment to hands-on learning is truly commendable.

BTEC Music's visit to Foxbarn Recording Studios.

Our BTEC Students took a deep dive into the world of sound engineering during their visit to Foxbarn Recording Studios. Displaying an impressive understanding of the recording process, they didn't shy away from challenging the sound engineer with informed questions. Their inquisitive nature and enthusiasm for learning showcased their interest in the subject.



Harley's College Course.

Harley has continued to engage well at college and is showing off his woodworking and painting skills. Keep up the hard work.

Group Adventure Learning Trip to the Climbing Centre.

A recent Adventure Learning trip took our students to new heights—quite literally! The climbing centre provided a thrilling backdrop for the Austen Form group. Laughter echoed as friendships were strengthened, and challenges were conquered. These shared experiences contribute to a rich tapestry of learning beyond the classroom, fostering camaraderie and resilience.






Stay tuned for more updates on the incredible journeys of Austen Form students!



BTEC Level 1 Cookery

The BTEC Level 1 group have chosen some of their favourite recipes to share with you this half term. We hope you enjoy cooking them at home.

Name	Recipe	Hints and tips
William	Apple Crumble  https://www.bbc.co.uk/food/recipes/applecrumble_2971	<p>It was very tasty and enjoyed by the family. Make sure you keep the butter cold when making the crumble. Nice served with custard.</p>
Faith Charlie Dylan	Chicken Korma  https://www.bbcgoodfood.com/recipes/chicken-korma	<p>Tasty. Fairly easy to make, served with naan bread for extra flavour.</p> <p>Very yummy and was very enjoyable to make. Serve with bread.</p> <p>It tasted nice, was fairly easy to make and I like curry.</p>
Harry	Yule log https://www.bbcgoodfood.com/recipes/yummy-chocolate-log 	<p>I really like yule log because it takes a dish that I already love which is Swiss roll with its soft pillow-like texture filled with cream and I also love the chocolate icing!</p> <p>I suggest this cake to people who have experience baking and who also want a challenge with a delicious reward at the end. My favourite cake!</p>



BTEC Level 2 Cookery

The BTEC Level 2 group have chosen some of their favourite recipes to share with you this half term. These recipes are a bit more detailed. We hope you enjoy cooking them at home.

Focaccia bread

<https://www.bbcgoodfood.com/recipes/focaccia>



Chicken Tikka Masala

<https://ministryofcurry.com/chicken-tikka-masala-instant-pt>

Ingredients	Sauce	Equipment
500g Chicken breast	1 onion	Weighing scales
2 tbsp lemon juice	Tomato puree	Mixing bowl
2 tbs oil	1 tbsp ginger puree	Mixing spoon
1 cup natural yoghurt	1tsp grama masala	Measuring cups
1 tbsp red chilli powder	1tsp red chill powder	Chopping boards
2tsp garam masala	Salt	Knife
1tsp turmeric	1/2 cup Milk	Jug
2tbsp ginger garlic paste	4 tbsp Butter	Hand blender
1 tsp cardamon	Coriander garnish	Tin foil
Salt		Baking sheet
Red food colouring		Cooking tongs
		Wok



This Photo by Unknown Author is

National Careers Week

NCW

National Careers Week (NCW) is a one-week celebration of careers guidance and free resources in education across the UK.

It will take place between 4th—9th March 2024.

Our aim is to provide a focus for careers guidance activity at an important stage in the academic calendar to help support young people develop awareness and excitement about their future pathways.

<https://nationalcareersweek.com/>

Further information from the school will follow.

2024 National Careers Week Day Sponsors



Monday



Tuesday



Wednesday



Thursday



Friday

Other Key Supporters



2023/2024 School Calendar

Autumn Term 2023 (open 72 days)

NASAT Training Days	Thursday 31 st August & Friday 1 st September 2023
INSET Days	Monday 4 th September 2023 Tuesday 5 th September 2023
School Opens	Wednesday 6 th September 2023
School Closes	Friday 20 th October 2023
Half Term	23 rd October – 27 th October 2023
School Opens	Monday 30 th October 2023
School Closes	Thursday 21 st December 2023
INSET Days	Friday 22 nd December 2023
Christmas Holiday	25 th December 2023 – 5 th January 2024

Spring Term 2024 (open 54 days)

School Opens	Monday 8 th January 2024
School Closes	Friday 16 th February 2024
Half Term	19 th February 2024 – 23 rd February 2024
School Opens	Monday 26 th February 2024
School Closes	Thursday 28 th March 2024
Easter Holiday	29 th March 2024 – 12 th April 2024

Summer Term 2024 (open 64 days)

School Opens	Monday 15 th April 2024
May Bank Holiday Monday	Monday 6 th May 2024
School Closes	Friday 24 th May 2024
Half Term	27 th May 2024 – 31 st May 2024
School Opens	Monday 3 rd June 2024
School Closes	Friday 19 th July 2024
INSET Days	Monday 22 nd July & Tuesday 23 rd July 2023

Contact Us



office@churchlawtonschool.org.uk



01270 877601



www.churchlawtonschool.org.uk



